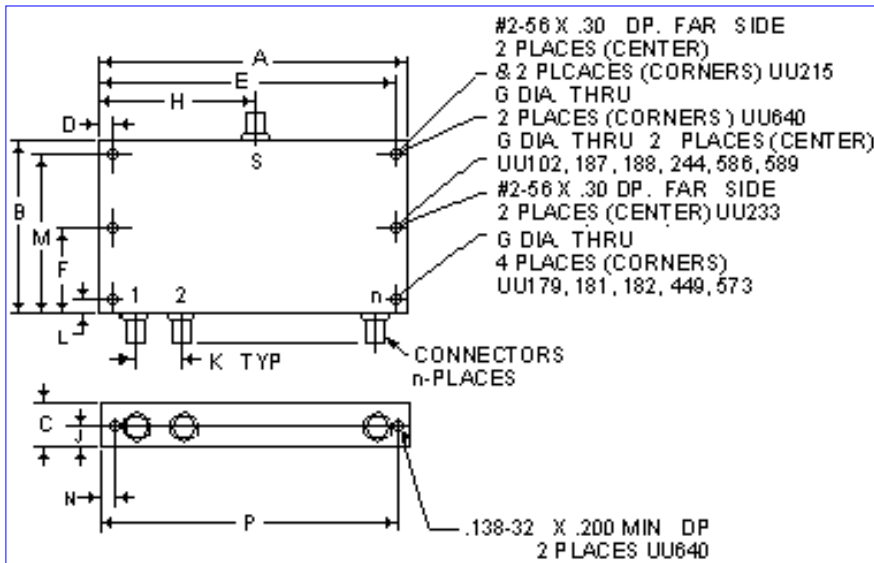


ZC16PD-24 16 Way-0°

Frequency MHz	Isolation, dB			Insertion Loss, dB Above 12.0dB			Phase Unbalance Degrees			Amplitude Unbalance, dB			Power Input, W		VSWR (:1)							
	L	M	U	L	M	U	L	M	U	L	M	U	as Combiner	as Splitter	S	OUT	Typ.	Max.				
$f_L - f_U$	Typ.	Min.	Typ.	Min.	Typ.	Min.	Typ.	Max.	Typ.	Max.	Typ.	Max.	Max.	Max.	Typ.	Max.	Typ.	Max.				
650-2400			25	14									0.90				3.00	240	1.20	1.90	1.10	1.50

L=low range(f_L to $10f_L$) M=mid range($10f_L$ to $f_U/2$) U=upper range($f_U/2$ to f_U)



FREQ (MHz)	Insertion Loss (dB) S-1	Amplitude Unbalance (dB)	Isolation (dB)		Phase Unbalance (Degrees)	FREQ (MHz)	VSWR S	VSWR 1
			1-2	2-3				
625.00	12.96	0.220	19.28	29.26	1.87	625.00	1.55	1.11
700.00	12.85	0.230	24.95	30.71	1.95	700.00	1.33	1.13
750.00	12.97	0.270	26.80	32.11	1.96	750.00	1.43	1.16
825.00	13.00	0.290	27.25	37.16	2.47	825.00	1.37	1.20
900.00	12.90	0.300	30.82	39.51	2.59	900.00	1.13	1.19
1050.00	12.94	0.320	42.35	34.18	2.10	1050.00	1.03	1.18
1200.00	12.99	0.250	29.56	33.55	2.88	1200.00	1.24	1.14
1350.00	13.11	0.240	27.88	30.62	3.24	1350.00	1.28	1.08
1500.00	13.21	0.250	27.34	32.34	3.95	1500.00	1.22	1.12
1650.00	13.25	0.280	26.43	41.17	4.09	1650.00	1.09	1.14
1800.00	13.31	0.300	24.83	52.40	4.29	1800.00	1.15	1.17
2025.00	13.47	0.260	32.02	40.01	4.51	2025.00	1.30	1.12
2175.00	13.43	0.320	34.54	33.40	5.20	2175.00	1.16	1.12
2350.00	13.52	0.380	30.51	41.58	5.27	2350.00	1.08	1.14
2420.00	13.64	0.420	26.19	47.83	5.66	2420.00	1.13	1.18

Case Style - UU640 (inch,mm) weight: 450 grams.

A	B	C	D	E	F	G	H	J
8.50	4.00	.50	.170	8.330	.201	4.25	.19	
215.900	101.600	12.700	4.318	211.582	5.105	107.950	4.826	
K	L	M	N	P	Q	R	S	T
.500		3.830	.150	8.350				
12.700		97.282	3.810	212.090				

Tolerance: .x ± .1 .xx ± .03 .xxx ± .015 inch.

Material and Finish:

Case material: aluminum alloy. Finish: iridite per MIL-C-5541

Connectors:

Connectors: Female SMA only.